

Software Requirements for Online Ansys Courses

The process of learning Ansys has a strong hands-on component. To successfully complete the course and adequately get familiarized with its interface, features and workflows, students will require access to the web conferencing system **Ring Central Meetings** and to the relevant **Ansys software**. It is the students' responsibility to ensure access is adequately set-up, but SimuTech is here to help! Please click the relevant link below based on your situation.

1. [How to Install Ring Central Meetings](#)
2. [Yes, I already have Ansys software! What now?](#)
3. [No, I do not currently have the Ansys software and/or licenses](#)

[How to Install Ring Central Meetings](#)

All courses will be taught via the RingCentral Meetings application. It allows for the instructor to deliver the lectures via screens sharing, create breakout rooms so that SimuTech support staff can help you during tutorials/workshops, for you to be able to share screens and for the instructor to be able to take control of your mouse and demonstrate things to you based on your questions.

To get Ring Central, please download and install this app prior to the course:

<https://www.ringcentral.com/apps/rc-meetings>

You may require administrative privileges to install the application. Please involve your IT early in the process.

Please note: As with many web conferencing solutions, Ring Central does offer a simpler web-browser based solution as well. This web-browser based solution is not adequate for the purpose of Ansys online training since it does not allow you to be assigned to a breakout room, or to receive help from an instructor during workshops.

Yes, I already have Ansys software! What now?

What this means:

- 1) You already have, and are able to launch Ansys Mechanical, Fluent, CFX or LS-Dyna (Depending on the course) and associated pre-processing tools (Workbench Meshing, SpaceClaim Direct Modeler)
- 2) It is recommended that you have the latest version of Ansys running on your machine. You can determine what the latest release is by checking the platform support documents on here: <https://www.ansys.com/solutions/solutions-by-role/it-professionals/platform-support>
- 3) Ensure you already have adequate access to licensing through your company. Please consider and plan for any conflicts that may arise between yourself and other users using licenses for production work during the time of the course. IMPORTANT: If you have the software, but you suspect an inadequate number of licenses available for reliable use during the course, you will have to utilize SimuTech's cloud license server. You can point to this server by following the instructions below (See section: [No, I do not currently have the Ansys software and/or licenses](#)).

No, I do not currently have the Ansys software and/or licenses

To get access:

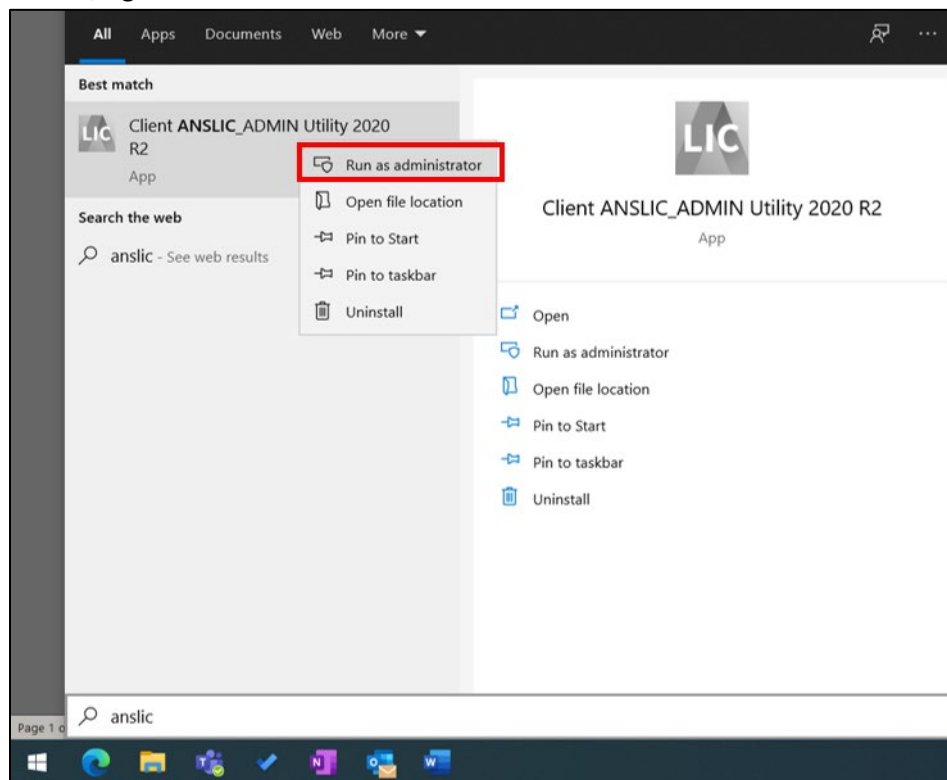
Many of the steps below will require administrative privileges to your computer/workstation. Please ensure you engage your IT department early (as required).

If all you require are licenses, please skip setp

- 1) Confirm you have access to a workstation computer capable of adequately running Ansys
 - a. Operating System Requirements: <https://www.ansys.com/-/media/ansys/corporate/files/pdf/solutions/it-professionals/platform-support/platform-support-by-application-product-2020-r2.pdf?la=en&hash=A91AFBF8948690BEC587EEA68D934061001D2683>
 - b. Graphics Cards Requirements: <https://www.ansys.com/-/media/ansys/corporate/files/pdf/solutions/it-professionals/platform-support/graphical-display-graphics-cards-tested-2020-r2.pdf?la=en&hash=57AD6E61827699B3CB3837589AF4025DBE222932>
 - c. Additional information: <https://www.simutechgroup.com/support/ansys-resources/ansys-hardware-support>
- 2) You will need to download and install the software on your machine. SimuTech's training coordinator will provide you with download links. Installation help videos and instructions can be found here: https://www.simutechgroup.com/support/ansys-resources/ansys-download-install#install_ansys
- 3) With the help of your IT, you will need to obtain your public **public IPv4 address** so that it can be "whitelisted" on the SimuTech Cloud License Server. This will allow the cloud license server to accept license requests/connections from your location. To gather this info, follow these steps in order:

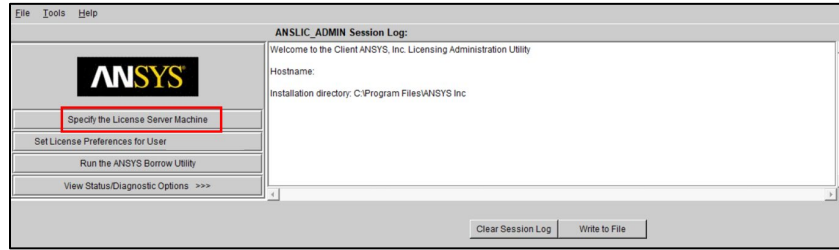
- a. First, you must be using the same internet connection that you will use on training day. If your working from multiple locations, you must obtain the IP address from the location that you will be working from during training.
 - b. Open an internet browser from the same computer you have Ansys installed on and will be using for the training course. (Ex. if your using Ansys via a remote computer, open the browser from that remote computer. If your using it from your local computer, open it from your local computer)
 - c. If you use a VPN, you must ensure your VPN is in the same state that it will be on training day (connected or disconnected). We recommend you disconnect your VPN during training if you do not have a reliable connection and or it's not necessary.
 - d. Finally, visit <https://www.whatismyip.com/> and obtain your public IPv4 Address. Provide this IPv4 Address to the SimuTech training coordinator.
- 4) The SimuTech training coordinator will give you SimuTech's license server name to be used in the steps below. Point your computer to SimuTech's Cloud License server by following the following instructions:

- a. In the Windows Start Menu, find the "Client ANSLIC_ADMIN Utility" for your software version, right click and select "Run as Administrator".

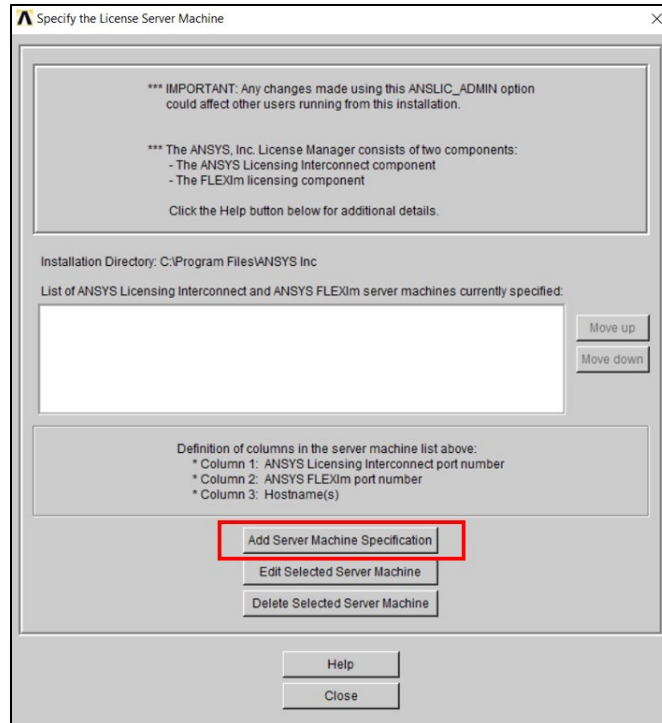


- b. A prompt asking you to allow the tool to machines to your device will come up. Select YES

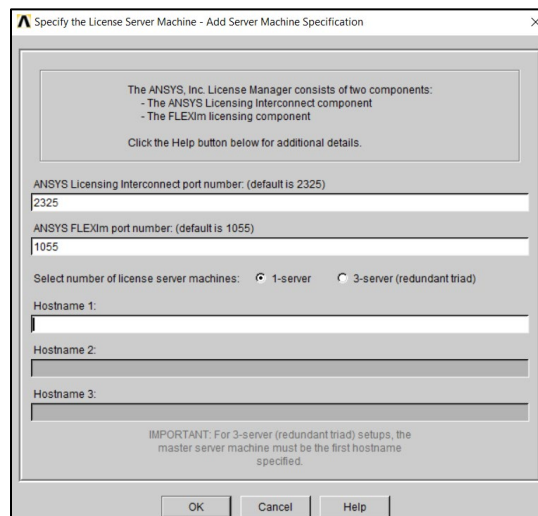
c. Select the “Specify the License Server Machine” button:



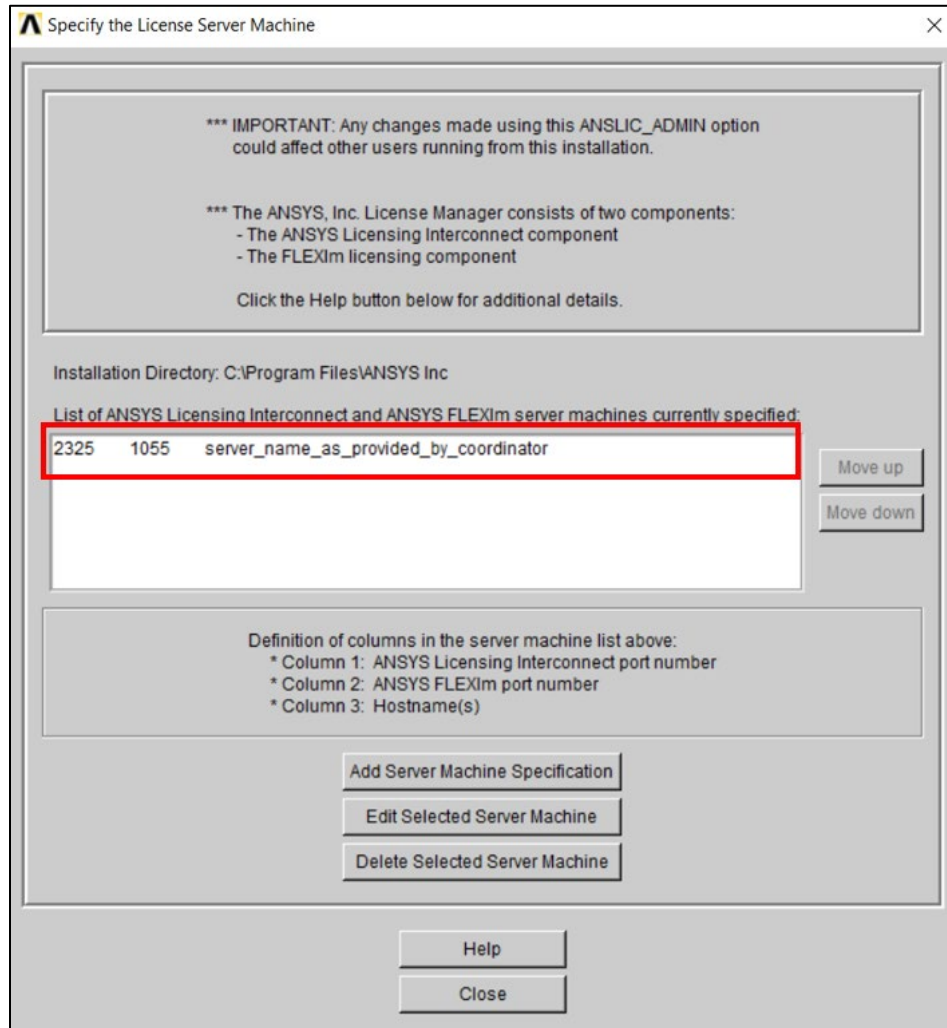
d. Click the “Add Server Machine Specification Button”



e. Under “Hostname 1” please enter the name of the SimuTech Cloud License server as provided by your training coordinator



- f. Click OK, to accept changes, and ensure the information appears in the server list.



- g. Close out of all remaining Windows and launch the Ansys software to test it. If you are not sure how to test it, you can do so with the help of a SimuTech employee during a scheduled test session prior to your course. Information on test sessions will be provided by the SimuTech training coordinator are held several days prior to the course start date.